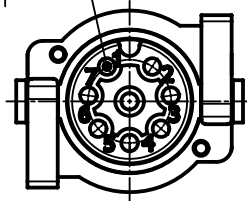
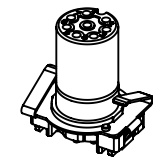
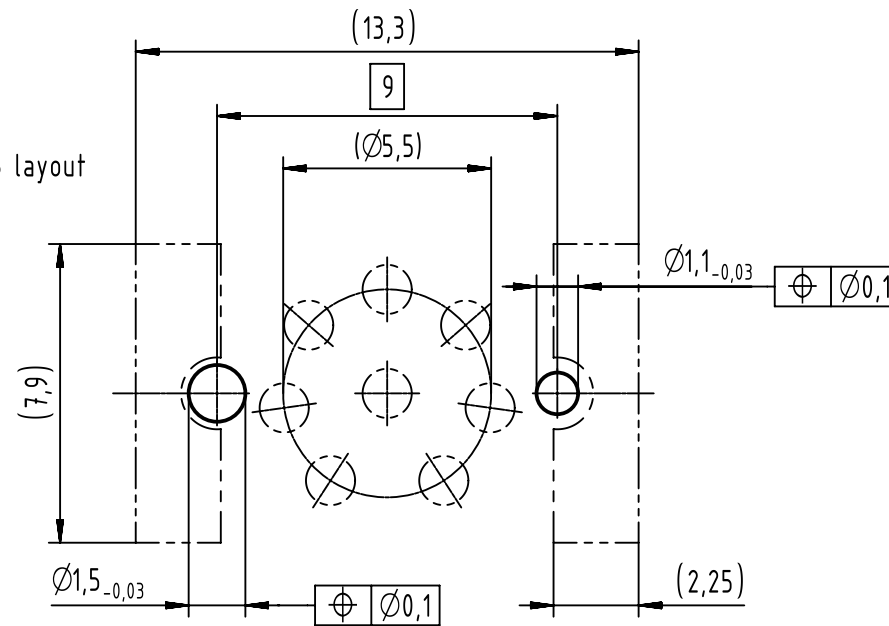



contact face acc. to IEC 61076-2-101



A (5:1)
recommended PCB layout



- 1 pcs. single package

	All rights reserved Department EL PD	All Dimensions in mm Original Size DIN A4		Scale 2:1	Free size tol.	Ref. Sub.
		Created by GRUBES	Inspected by HARLASS	Standardisation KOHLER	Date 2018-12-18	State Final Release
HARTING Electronics GmbH D-32339 Espelkamp		Title HARTING M12 PCB recpt str 8-pole A-coded female			Doc-Key / ECM-Nr. 100671212/UGD/000/B 500000145006	
		Type TB	Number 21033212802		Rev. B	Page 1/1